



SAMUEL HEATH

Architectural Hardware

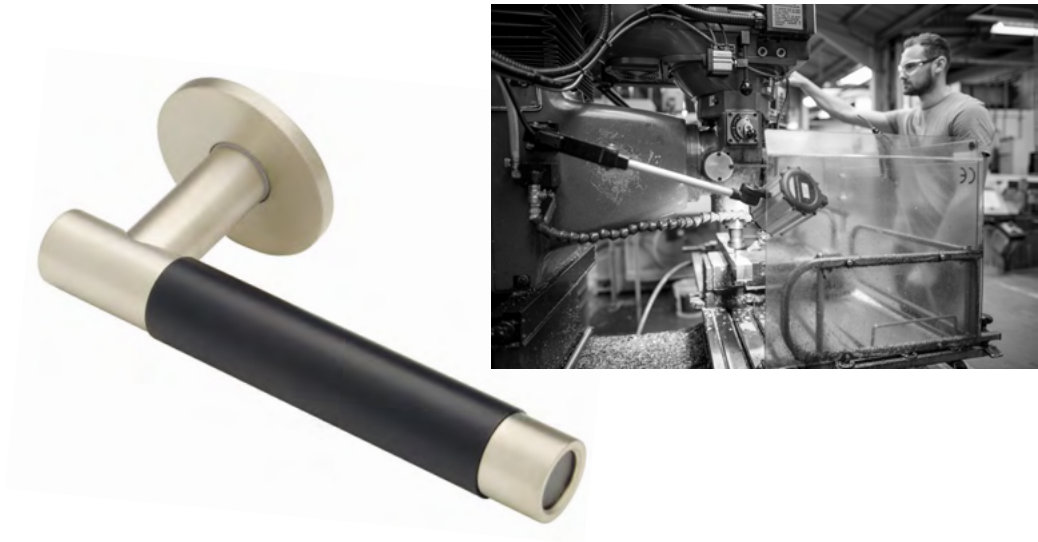
“CREATING HARMONY BETWEEN THE
DESIGN OF AN OBJECT AND
ITS FUNCTION”



The Exclusive Door Hardware Range



Sixty different finish and grip combinations so that each door lever can be exclusive to you.



Landmark/LMK(US) lever P6040
round rose P8010

Use with heavy - sprung latch/lock



P6040 Door lever unsprung
Length: 145mm; 5 11/16"

P8010 Rose
Diameter: 52mm; 2 1/16"

Shown here in **CP** Chrome plate
and **MBC** Matt black chrome.
Lever and rose sold separately.
Supplied as a pair.

Landmark/LMK(US) lever P6041
Windermere backplate P8025

Use with heavy - sprung latch/lock

Any combination of the
finishes below is possible



P6041 Door lever unsprung
Length: 145mm; 5 11/16"

P8025 Backplate, no key hole
Size: 50mm x 200mm; 2" x 7 7/8"

Shown here in **CTB** City bronze and
BGM Brushed gold matt finish.
Lever and backplate sold separately.
Supplied as a pair.

For other backplate variants see page 27.



NL
Non lacquered brass



CP
Chrome plate



PN
Polished nickel



SSF
Stainless steel
finish



ABU
Antique brass
unlacquered

Landmark/LMK(US) lever P6040
round rose P8010

Use with heavy - sprung latch/lock



P6040 Door lever unsprung
Length: 145mm; 5 11/16"

P8010 Rose
Diameter: 52mm; 2 1/16"

Shown here in **ABU** Antique brass unlacquered and **CTB** City bronze finish.
Lever and rose sold separately.
Supplied as a pair.

Landmark/LMK(US) lever P6041
Derwent backplate P8035

Use with heavy - sprung latch/lock

Any combination of the finishes below is possible



P6041 Door lever unsprung
Length: 145mm; 5 11/16"

P8035 Backplate, no key hole
Size: 50mm x 200mm; 2" x 7 7/8"

Shown here in **BGM** Brushed gold matt and **ABU** Antique brass unlacquered finish.
Lever and backplate sold separately.
Supplied as a pair.

For other backplate variants see page 27.



BGG
Brushed gold
gloss



BGM
Brushed gold
matt



MBC
Matt black
chrome



CTB
City bronze

Bauhaus lever P6044
round rose P8010

Use with heavy - sprung latch/lock



P6044 Door lever unsprung
Length: 145mm; 5 11/16"

P8010 Rose
Diameter: 52mm; 2 1/16"

Shown here in **MBC** Matt black chrome
and **SSF** Stainless steel finish.
Lever and rose sold separately.
Supplied as a pair.

Bauhaus lever P6044
round rose P8010

Use with heavy - sprung latch/lock

Any combination of the
finishes below is possible



P6044 Door lever unsprung
Length: 145mm; 5 11/16"

P8010 Rose
Diameter: 52mm; 2 1/16"

Shown here in **SSF** Stainless steel finish
and **PN** Polished nickel finish.
Lever and rose sold separately.
Supplied as a pair.



NL
Non lacquered brass



CP
Chrome plate



PN
Polished nickel



SSF
Stainless steel
finish



ABU
Antique brass
unlacquered

Bauhaus lever P6044
round rose P8010

Use with heavy - sprung latch/lock



P6044 Door lever unsprung
Length: 145mm; 5 11/16"

P8010 Rose
Diameter: 52mm; 2 1/16"

Shown here in **MBC** Matt black chrome
and **NL** Non lacquered brass finish.
Lever and rose sold separately.
Supplied as a pair.

Bauhaus lever P6044
round rose P8010

Use with heavy - sprung latch/lock

Any combination of the
finishes below is possible



P6044 Door lever unsprung
Length: 145mm; 5 11/16"

P8010 Rose
Diameter: 52mm; 2 1/16"

Shown here in **CTB** City bronze and
SSF Stainless steel finish.
Lever and backplate sold separately.
Supplied as a pair.



BGG
Brushed gold
gloss



BGM
Brushed gold
matt



MBC
Matt black
chrome



CTB
City bronze

Reeded lever P6046
round rose P8010

Use with heavy - sprung latch/lock

P6046 Door lever unsprung
Length: 145mm; 5 11/16"

P8010 Rose
Diameter: 52mm; 2 1/16"

Shown here in **ABU** Antique brass unlacquered finish and **BGM** Brushed gold matt finish.
Lever and rose sold separately.
Supplied as a pair.



Reeded lever P6047
Windermere backplate P8025

Use with heavy - sprung latch/lock

Any combination of the finishes below is possible

P6047 Door lever unsprung
Length: 145mm; 5 11/16"

P8025 Backplate, no key hole
Size: 50mm x 200mm; 2" x 7 7/8"

Shown here in **CTB** City bronze and **ABU** Antique brass unlacquered finish.
Lever and backplate sold separately.
Supplied as a pair.

For other backplate variants see page 27.



NL
Non lacquered brass



CP
Chrome plate



PN
Polished nickel



SSF
Stainless steel
finish



ABU
Antique brass
unlacquered

Reeded lever P6046
round rose P8010

Use with heavy - sprung latch/lock

P6046 Door lever unsprung
Length: 145mm; 5 11/16"

P8010 Rose
Diameter: 52mm; 2 1/16"

Shown here in **CTB** City bronze and
BGM Brushed gold matt finish.
Lever and rose sold separately.
Supplied as a pair.



Reeded lever P6047

Derwent backplate P8035

Use with heavy - sprung latch/lock

Any combination of the
finishes below is possible

P6047 Door lever unsprung
Length: 145mm; 5 11/16"

P8035 Backplate, no key hole
Size: 50mm x 200mm; 2" x 7 7/8"

Shown here in **SSF** Stainless steel and
MBC Matt black chrome finish.
Lever and backplate sold separately.
Supplied as a pair.

For other backplate variants see page 27.



BGG
Brushed gold
gloss



BGM
Brushed gold
matt



MBC
Matt black
chrome



CTB
City bronze

Landmark/LMK(US) pull handle P8250

P8250-A Pull handle
Length: 175mm; 6 7/8"
Centres: 100mm; 3 15/16"

P8250-B Pull handle
Length: 225mm; 8 7/8"
Centres: 150mm; 5 7/8"

P8250-C Pull handle
Length: 275mm; 10 13/16"
Centres: 200mm; 7 7/8"

P8250-D Pull handle
P8251-D Pull handle, back to back
Length: 461mm; 18 3/16"
Centres: 300mm; 11 13/16"

P8250-E Pull handle
P8251-E Pull handle, back to back
Length: 612mm; 24 1/8"
Centres: 450mm; 17 11/16"

P8250-F Pull handle
P8251-F Pull handle, back to back
Length: 761mm; 30"
Centres: 600mm; 23 5/8"

P8250-D shown here in **PN** Polished nickel finish and below in **ABU** Antique brass unlacquered finish.



10



Pull handle end detail



NL
Non lacquered brass



CP
Chrome plate



PN
Polished nickel



SSF
Stainless steel finish



ABU
Antique brass unlacquered

Bauhaus pull handle P8252

P8252-A Pull handle
Length: 175mm; 6 7/8"
Centres: 100mm; 3 15/16"

P8252-B Pull handle
Length: 225mm; 8 7/8"
Centres: 150mm; 5 7/8"

P8252-C Pull handle
Length: 275mm; 10 13/16"
Centres: 200mm; 7 7/8"

P8252-D Pull handle
P8253-D Pull handle, back to back
Length: 461mm; 18 3/16"
Centres: 300mm; 11 13/16"

P8252-E Pull handle
P8253-E Pull handle, back to back
Length: 612mm; 24 1/8"
Centres: 450mm; 17 11/16"

P8252-F Pull handle
P8253-F Pull handle, back to back
Length: 761mm; 30"
Centres: 600mm; 23 5/8"

P8252-D shown here in **SSF** Stainless steel finish and below in **BGM** Brushed gold matt finish.



Pull handle end detail



BGG
Brushed gold
gloss



BGM
Brushed gold
matt



MBC
Matt black
chrome



CTB
City bronze

Reeded pull handle P8254

P8254-A Pull handle
Length: 175mm; 6 7/8"
Centres: 100mm; 3 15/16"

P8254-B Pull handle
Length: 225mm; 8 7/8"
Centres: 150mm; 5 7/8"

P8254-C Pull handle
Length: 275mm; 10 13/16"
Centres: 200mm; 7 7/8"

P8254-D Pull handle
P8255-D Pull handle, back to back
Length: 461mm; 18 3/16"
Centres: 300mm; 11 13/16"

P8254-E Pull handle
P8255-E Pull handle, back to back
Length: 612mm; 24 1/8"
Centres: 450mm; 17 11/16"

P8254-F Pull handle
P8255-F Pull handle, back to back
Length: 761mm; 30"
Centres: 600mm; 23 5/8"

P8254-D shown here in **CP** Chrome plate finish
and below in **MBC** Matt black chrome finish.



Pull handle end detail



NL
Non lacquered brass



CP
Chrome plate



PN
Polished nickel



SSF
Stainless steel
finish



ABU
Antique brass
unlacquered



BGG
Brushed gold
gloss



BGM
Brushed gold
matt



MBC
Matt black
chrome



CTB
City bronze

Brandreth lever P6981

Elter rose P8006-B

Use with heavy - sprung latch/lock

P6981 Door lever unsprung
Length: 135mm; 5 5/16"

P8006-B Rose (illustrated)

Diameter: 63mm; 2 1/2"

P8006-C Rose (not illustrated)

Diameter: 69mm; 2 11/16"

Shown here in **SSF** Stainless steel finish.
Lever and rose sold separately.
Supplied as a pair.



Brandreth lever P6981

Windermere backplate P8020

Use with heavy - sprung latch/lock

P6981 Door lever unsprung
Length: 135mm; 5 5/16"

P8020 Backplate, lever lock
Size: 50mm x 200mm; 2" x 7 7/8"

Shown here in **NL** Non lacquered finish.
Lever and backplate sold separately.
Supplied as a pair.

For other backplate variants see page 27.



NL
Non lacquered brass



PB
Polished brass



CP
Chrome plate



PN
Polished nickel



SSF
Stainless steel
finish

Scafell lever P6982

Thirlmere rose P8008-B

Use with heavy - sprung latch/lock

P6982 Door lever unsprung
Length: 134mm; 5 1/4"

P8008-B Rose (illustrated)
Diameter: 57mm; 2 1/4"

P8008-C Rose (not illustrated)
Diameter: 62.5mm; 2 1/2"

Shown here in **CTB** City bronze finish.
Lever and rose sold separately.
Supplied as a pair.



Scafell lever P6982

Derwent backplate P8032

Use with heavy - sprung latch/lock

P6982 Door lever unsprung
Length: 134mm; 5 1/4"

P8032 Backplate, euro profile
Size: 50mm x 200mm; 2" x 7 7/8"

Shown here in **PN** Polished nickel finish.
Lever and backplate sold separately.
Supplied as a pair.

For other backplate variants see page 27.



ABU
Antique brass
unacquered



BGG
Brushed gold
gloss



BGM
Brushed gold
matt



MBC
Matt black
chrome



CTB
City bronze

Coniston lever P6983

Ullswater rose P8007-B

Use with heavy - sprung latch/lock

P6983 Door lever unsprung
Length: 137mm; 5 3/8"

P8007-B Rose (illustrated)
Diameter: 54mm; 2 1/8"

P8007-C Rose (not illustrated)
Diameter: 60mm; 2 3/8"

Shown here in **MBC** Matt black chrome finish.
Lever and rose sold separately.
Supplied as a pair.



Coniston lever P6983

Windermere backplate P8025

Use with heavy - sprung latch/lock

P6983 Door lever unsprung
Length: 137mm; 5 3/8"

P8025 Backplate, no key hole
Size: 50mm x 200mm; 2" x 7 7/8"

Shown here in **BGM** Brushed gold matt finish.
Lever and backplate sold separately.
Supplied as a pair.

For other backplate variants see page 27.



NL
Non lacquered brass



PB
Polished brass



CP
Chrome plate



PN
Polished nickel



SSF
Stainless steel
finish

Helvellyn lever P6984

Bassenthwaite rose P8009-B

Use with heavy - sprung latch/lock

P6984 Door lever unsprung
Length: 165mm; 6 1/2"

P8009-B Rose (illustrated)
Diameter: 63mm; 2 1/2"

P8009-C Rose (not illustrated)
Diameter: 69mm; 2 11/16"

Shown here in **BGM** Brushed gold matt finish.
Lever and rose sold separately.
Supplied as a pair.



Helvellyn lever P6984

Derwent backplate P8035

Use with heavy - sprung latch/lock

P6984 Door lever unsprung
Length: 165mm; 6 1/2"

P8035 Backplate, no key hole
Size: 50mm x 200mm; 2" x 7 7/8"

Shown here in **BGG** Brushed gold
gloss finish.
Lever and backplate sold separately.
Supplied as a pair.

For other backplate variants see page 27.



ABU
Antique brass
unacquered



BGG
Brushed gold
gloss



BGM
Brushed gold
matt



MBC
Matt black
chrome



CTB
City bronze

Esk lever P6056

Buttermere rose P8004

Use with heavy - sprung latch/lock

P6056 Door lever unsprung
Length: 111mm; 4 3/8"

P8004 Rose
Diameter: 40mm; 1 9/16"

Shown here in **CTB** City bronze finish.
Lever and rose sold separately.
Supplied as a pair.



Esk lever P6056

Windermere backplate P8025

Use with heavy - sprung latch/lock

P6056 Door lever unsprung
Length: 111mm; 4 3/8"

P8025 Backplate, no keyhole
Size: 50mm x 200mm; 2" x 7 7/8"

Shown here in **SSF** Stainless steel finish.
Lever and backplate sold separately.
Supplied as a pair.

For other backplate variants see page 27.



NL
Non lacquered brass



PB
Polished brass



CP
Chrome plate



PN
Polished nickel



SSF
Stainless steel
finish

Skiddaw lever P6057

Buttermere rose P8004

Use with heavy - sprung latch/lock

P6057 Door lever unsprung
Length: 111mm; 4 3/8"

P8004 Rose
Diameter: 40mm; 1 9/16"

Shown here in **NL** Non lacquered brass finish.
Lever and rose sold separately.
Supplied as a pair.



Skiddaw lever P6057

Derwent backplate P8030

Use with heavy - sprung latch/lock

P6057 Door lever unsprung
Length: 111mm; 4 3/8"

P8030 Backplate, lever lock
Size: 50mm x 200mm; 2" x 7 7/8"

Shown here in **PN** Polished nickel finish.
Lever and backplate sold separately.
Supplied as a pair.

For other backplate variants see page 27.



ABU
Antique brass
unlacquered



BGG
Brushed gold
gloss



BGM
Brushed gold
matt



MBC
Matt black
chrome



CTB
City bronze

Blencathra lever P6973

Buttermere rose P8001-B

Use with heavy - sprung latch/lock

P6973 Door lever unsprung
Length: 127mm; 5"

P8001-A Rose (not illustrated)
Diameter: 57mm; 2 1/4"

P8001-B Rose (illustrated)
Diameter: 64mm; 2 1/2"

P8001-C Rose (not illustrated)
Diameter: 70mm; 2 3/4"

Shown here in **NL** Non lacquered brass finish.
Lever and rose sold separately.
Supplied as a pair.



Blencathra lever P6973

Windermere backplate P8025

Use with heavy - sprung latch/lock

P6973 Door lever unsprung
Length: 127mm; 5"

P8025 Backplate, no keyhole
Size: 50mm x 200mm; 2" x 7 7/8"

Shown here in **CP** Chrome plate finish.
Lever and backplate sold separately.
Supplied as a pair.

For other backplate variants see page 27.



NL
Non lacquered brass



PB
Polished brass



CP
Chrome plate



PN
Polished nickel



SSF
Stainless steel
finish

Bowfell lever P6974

Thirlmere rose P8008-B

Use with heavy - sprung latch/lock



P6974 Door lever unsprung
Length: 127mm; 5"

P8008-B Rose (illustrated)
Diameter: 57mm; 2 1/4"

P8008-C Rose (not illustrated)
Diameter: 62.5mm; 2 1/2"

Shown here in **BGM** Brushed gold matt finish.
Lever and rose sold separately.
Supplied as a pair.

Bowfell lever P6974

Derwent backplate P8030

Use with heavy - sprung latch/lock



P6974 Door lever unsprung
Length: 127mm; 5"

P8030 Backplate, lever lock
Size: 50mm x 200mm; 2" x 7 7/8"

Shown here in **ABU** Antique brass
unlacquered finish.
Lever and backplate sold separately.
Supplied as a pair.

For other backplate variants see page 27.



ABU
Antique brass
unlacquered



BGG
Brushed gold
gloss



BGM
Brushed gold
matt



MBC
Matt black
chrome



CTB
City bronze

Blencathra lever P6973-B

Ullswater rose P8007-B

Use with heavy - sprung latch/lock

P6973-B Door lever unsprung
Length: 141mm; 5 9/16"

P8007-B Rose (illustrated)
Diameter: 54mm; 2 1/8"

P8007-C Rose (not illustrated)
Diameter: 60mm; 2 3/8"

Shown here in **PN** Polished nickel finish.
Lever and rose sold separately.
Supplied as a pair.



Blencathra lever P6973-B

Windermere backplate P8025

Use with heavy - sprung latch/lock

P6973-B Door lever unsprung
Length: 141mm; 5 9/16"

P8025 Backplate, no key hole
Size: 50mm x 200mm; 2" x 7 7/8"

Shown here in **CTB** City bronze finish.
Lever and backplate sold separately.
Supplied as a pair.

For other backplate variants see page 27.



NL
Non lacquered brass



PB
Polished brass



CP
Chrome plate



PN
Polished nickel



SSF
Stainless steel
finish

Bowfell lever P6974-B

Thirlmere rose P8008-B

Use with heavy - sprung latch/lock

P6974-B Door lever unsprung
Length: 141mm; 5 9/16"

P8008-B Rose (illustrated)
Diameter: 57mm; 2 1/4"

P8008-C Rose (not illustrated)
Diameter: 62.5mm; 2 1/2"

Shown here in **NL** Non lacquered brass finish.
Lever and rose sold separately.
Supplied as a pair.



Bowfell lever P6974-B

Derwent backplate P8035

Use with heavy - sprung latch/lock

P6974-B Door lever unsprung
Length: 141mm; 5 9/16"

P8035 Backplate, no key hole
Size: 50mm x 200mm; 2" x 7 7/8"

Shown here in **CTB** City bronze finish.
Lever and backplate sold separately.
Supplied as a pair.

For other backplate variants see page 27.



ABU
Antique brass
unlacquered



BGG
Brushed gold
gloss



BGM
Brushed gold
matt



MBC
Matt black
chrome



CTB
City bronze

Blencathra sprung lever P6973SP



P6973SP Door lever, sprung
Length: 127mm; 5"
Rose diameter: 60mm; 2 3/8"

Shown here in **ABU** Antique brass
unlacquered finish.
Supplied as a pair.

Blencathra sprung lever P6973SP-B



P6973SP-B Door lever, sprung
Length: 141mm; 5 9/16"
Rose diameter: 60mm; 2 3/8"

Shown here in **BGG** Brushed gold gloss finish.
Supplied as a pair.



NL
Non lacquered brass



PB
Polished brass



CP
Chrome plate



PN
Polished nickel



SSF
Stainless steel
finish

Bowfell sprung lever P6974SP



P6974SP Door lever, sprung
Length: 127mm; 5"
Rose diameter: 60mm; 2 3/8"

Shown here in **PN** Polished nickel finish.
Supplied as a pair.

Bowfell sprung lever P6974SP-B



P6974SP-B Door lever, sprung
Length: 141mm; 5 9/16"
Rose diameter: 60mm; 2 3/8"

Shown here in **ABU** Antique brass
unlacquered finish.
Supplied as a pair.



ABU
Antique brass
unlacquered



BGG
Brushed gold
gloss



BGM
Brushed gold
matt



MBC
Matt black
chrome



CTB
City bronze

Glaramara lever P6052

Rydal rose P8005

Use with heavy - sprung latch/lock

P6052 Door lever, unsprung
Length: 113mm; 4 1/2"

P8005 Rose
Diameter: 40mm; 1 9/16"

Shown here in **MBC** Matt black chrome finish.
Lever and rose sold separately.
Supplied as a pair.



Glaramara lever P6052

Windermere rose P8025

Use with heavy - sprung latch/lock

P6052 Door lever, unsprung
Length: 113mm; 4 1/2"

P8025 Backplate, no key hole
Size: 50mm x 200mm; 2" x 7 7/8"

Shown here in **SSF** Stainless steel finish.
Lever and backplate sold separately.
Supplied as a pair.

For other backplate variants see page 27.



NL
Non lacquered brass



PB
Polished brass



CP
Chrome plate



PN
Polished nickel



SSF
Stainless steel
finish

Windermere backplates



P8025 No keyhole
Plate: 50mm x 200mm
2" x 7 7/8"



P8020 Lever lock
Plate: 50mm x 200mm
2" x 7 7/8"
Centres: 57mm, 2 1/4"



P8021 Euro profile
Plate: 50mm x 200mm
2" x 7 7/8"
Centres:
P8021: 48.5mm, 1 15/16"
P8022: 72mm, 2 13/16"



P8023T Thumb turn
Plate: 50mm x 200mm
2" x 7 7/8"
Centres:
P8023T: 57mm, 2 1/4"
P8024T: 78mm, 3 1/16"



P8023CR Coin release
Plate: 50mm x 200mm
2" x 7 7/8"
Centres:
P8023T: 57mm, 2 1/4"
P8024T: 78mm, 3 1/16"

Derwent backplates



P8035
Plate: 50mm x 200mm
2" x 7 7/8"



P8030
Plate: 50mm x 200mm
2" x 7 7/8"
Centres: 57mm, 2 1/4"



P8031
Plate: 50mm x 200mm
2" x 7 7/8"
Centres:
P8031: 48.5mm, 1 15/16"
P8032: 72mm, 2 13/16"



P8033T
Plate: 50mm x 200mm
2" x 7 7/8"
Centres:
P8033T: 57mm, 2 1/4"
P8034T: 78mm, 3 1/16"



P8033CR
Plate: 50mm x 200mm
2" x 7 7/8"
Centres:
P8033T: 57mm, 2 1/4"
P8034T: 78mm, 3 1/16"



ABU
Antique brass
unlacquered



BGG
Brushed gold
gloss



BGM
Brushed gold
matt



MBC
Matt black
chrome



CTB
City bronze

Haystacks door knob P8052-B

Buttermere rose P8001-B

Use with good quality latch/lock



Door knob A size Ø 51mm; 2"
Door knob B size Ø 57mm; 2 1/4" (illustrated)
Door knob C size Ø 64mm; 2 1/2"

Rose A size Ø 57mm; 2 1/4"
Rose B size Ø 64mm; 2 1/2" (illustrated)
Rose C size Ø 70mm; 2 3/4"

Shown here in **CTB** City bronze finish.
Knob/rose sold separately.
Supplied as a pair.



NL
Non lacquered brass



PB
Polished brass



CP
Chrome plate



PN
Polished nickel



SSF
Stainless steel
finish

Great Gable door knob P8056-B

Buttermere rose P8001-B

Use with good quality latch/lock



Door knob A size Ø 45mm; 1 3/4"
Door knob B size Ø 57mm; 2 1/4" (illustrated)

Rose A size Ø 57mm; 2 1/4"
Rose B size Ø 64mm; 2 1/2" (illustrated)
Rose C size Ø 70mm; 2 3/4"

Shown here in **PN** Polished nickel finish.
Knob/rose sold separately.
Supplied as a pair.



ABU
Antique brass
unlacquered



BGG
Brushed gold
gloss



BGM
Brushed gold
matt



MBC
Matt black
chrome



CTB
City bronze

Steeple door knob P8055-A

Rydal rose P8003-A

Use with good quality latch/lock



Door knob A size Ø 51mm; 2" (illustrated)
Door knob B size Ø 57mm; 2 1/4"
Door knob C size Ø 64mm; 2 1/2"

Rose A size Ø 57mm; 2 1/4" (illustrated)
Rose B size Ø 64mm; 2 1/2"
Rose C size Ø 70mm; 2 3/4"

30

Shown here in **ABU** Antique
brass unlacquered finish.
Knob/rose sold separately.
Supplied as a pair.



NL
Non lacquered brass



PB
Polished brass



CP
Chrome plate



PN
Polished nickel



SSF
Stainless steel
finish

Pillar door knob P8057-B

Rydal rose P8003-B

Use with good quality latch/lock



Door knob A size Ø 45mm; 1 3/4"
Door knob B size Ø 57mm; 2 1/4" (illustrated)

Rose A size Ø 57mm; 2 1/4"
Rose B size Ø 64mm; 2 1/2" (illustrated)
Rose C size Ø 70mm; 2 3/4"

Shown here in **CP** Chrome plate finish.
Knob/rose sold separately.
Supplied as a pair.



ABU
Antique brass
unacquered



BGG
Brushed gold
gloss



BGM
Brushed gold
matt



MBC
Matt black
chrome



CTB
City bronze

Fairfield door knob P8061-B

Ullswater rose P8007-B

Use with good quality latch/lock



Door knob B size Ø 63mm; 2 1/2" (illustrated)
Door knob C size Ø 69mm; 2 3/4"

32

Rose B size Ø 54mm; 2 1/8" (illustrated)
Rose C size Ø 60mm; 2 3/8"

Shown here in **SSF** Stainless steel finish.
Knob/rose sold separately.
Supplied as a pair.



NL
Non lacquered brass



PB
Polished brass



CP
Chrome plate



PN
Polished nickel



SSF
Stainless steel
finish

Loughrigg door knob P8065-B

Bassenthwaite rose P8009-B

Use with good quality latch/lock



Door knob B size Ø 63mm; 2 1/2" (illustrated)
Door knob C size Ø 69mm; 2 3/4"

Rose B size Ø 63mm; 2 1/2" (illustrated)
Rose C size Ø 69mm; 2 3/4"

Shown here in **MBC** Matt black
chrome finish.
Knob/rose sold separately.
Supplied as a pair.



ABU
Antique brass
unacquered



BGG
Brushed gold
gloss



BGM
Brushed gold
matt



MBC
Matt black
chrome



CTB
City bronze

Seathwaite door knob P8060-B

Elter rose P8006-B

Use with good quality latch/lock



Door knob B size Ø 63mm; 2 1/2" (illustrated)
Door knob C size Ø 69mm; 2 3/4"

Rose B size Ø 63mm; 2 1/2" (illustrated)
Rose C size Ø 69mm; 2 3/4"

Shown here in **ABU** Antique brass
unlacquered finish.
Knob/rose sold separately.
Supplied as a pair.



NL
Non lacquered brass



PB
Polished brass



CP
Chrome plate



PN
Polished nickel



SSF
Stainless steel
finish

Grisedale door knob P8062-B

Thirlmere rose P8008-B

Use with good quality latch/lock



Door knob B size Ø 63mm; 2 1/2" (illustrated)
Door knob C size Ø 69mm; 2 3/4"

Rose B size Ø 63mm; 2 1/2" (illustrated)
Rose C size Ø 69mm; 2 3/4"

Shown here in **BGG** Brushed gold
gloss finish.
Knob/rose sold separately.
Supplied as a pair.



ABU
Antique brass
unacquered



BGG
Brushed gold
gloss



BGM
Brushed gold
matt



MBC
Matt black
chrome



CTB
City bronze

Hopegill door knob P7487

Bassenthwaite rose P8009-B

Use with good quality latch/lock



Door knob size 60mm x 40mm; 2 3/8" x 1 5/8"

Rose B size Ø 63mm; 2 1/2" (illustrated)

Rose C size Ø 69mm; 2 3/4"

36

Shown here in **PN** Polished nickel finish.

Knob/rose sold separately.

Supplied as a pair.



NL
Non lacquered brass



PB
Polished brass



CP
Chrome plate



PN
Polished nickel



SSF
Stainless steel
finish

Bowscale door knob P8101

Ullswater rose P8007-B

Use with good quality latch/lock



Door knob size 60mm x 40mm; 2 3/8" x 1 5/8"

Rose B size Ø 54mm; 2 1/8" (illustrated)

Rose C size Ø 60mm; 2 3/8"

Shown here in **ABU** Antique brass
unlacquered finish.
Knob/rose sold separately.
Supplied as a pair.



ABU
Antique brass
unlacquered



BGG
Brushed gold
gloss



BGM
Brushed gold
matt



MBC
Matt black
chrome



CTB
City bronze

Internal Door Fittings

Bathroom thumb turn, concealed fix P8176T



P8176T Bathroom thumb turn, concealed fix
P8176TUS Bathroom thumb turn, concealed fix
(USA spindle on diamond)
Size: knob 32mm x 20mm; 1 1/4" x 3/4"
Rose Ø: 35mm; 1 3/8"

Shown here in **SSF** Stainless steel finish.

Must be used complete with coin release.



Bathroom coin release, concealed fix P8176CR



P8176CR Bathroom coin release, concealed fix
Size Ø: 35mm; 1 3/8"

Shown here in **SSF** Stainless steel finish.



NL
Non lacquered brass



PB
Polished brass



CP
Chrome plate



PN
Polished nickel



SSF
Stainless steel
finish

Internal Door Fittings

Bathroom thumb turn, concealed fix P8174T



P8174T Bathroom thumb turn, concealed fix
P8174TUS Bathroom thumb turn, concealed fix
(USA spindle on diamond)
Size: knob 24mm x 32mm; 1" x 1 1/4"
Rose Ø: 35mm; 1 3/8"

Shown here in **ABU** Antique brass unlacquered finish.

Must be used complete with coin release.



Bathroom coin release, concealed fix P8174CR



P8174CR Bathroom coin release, concealed fix
Size Ø: 35mm; 1 3/8"

Shown here in **ABU** Antique brass unlacquered finish.



ABU
Antique brass
unlacquered



BGG
Brushed gold
gloss



BGM
Brushed gold
matt



MBC
Matt black
chrome



CTB
City bronze

Internal Door Fittings

Bathroom thumb turn, concealed fix P8160T



P8160T Bathroom thumb turn, concealed fix
Size: knob 35mm x 23mm; 1 3/8" x 15/16"
Rose Ø: 35mm; 1 3/8"

Shown here in **ABU** Antique brass unlacquered finish.

Must be used complete with coin release.



40

Bathroom coin release, concealed fix P8160CR



P8160CR Bathroom coin release, concealed fix
Size Ø: 35mm; 1 3/8"

Shown here in **ABU** Antique brass unlacquered finish.



NL
Non lacquered brass



PB
Polished brass



CP
Chrome plate



PN
Polished nickel



SSF
Stainless steel
finish

Internal Door Fittings

Bathroom thumb turn, concealed fix P8165T



P8165T Bathroom thumb turn, concealed fix
Size: knob 35mm x 23mm; 1 3/8" x 15/16"
Rose Ø: 35mm; 1 3/8"

Shown here in **CTB** City bronze finish.

Must be used complete with coin release.



Bathroom coin release, concealed fix P8165CR



P8165CR Bathroom coin release, concealed fix
Size Ø: 35mm; 1 3/8"

Shown here in **CTB** City bronze finish.



ABU
Antique brass
unlacquered



BGG
Brushed gold
gloss



BGM
Brushed gold
matt



MBC
Matt black
chrome



CTB
City bronze

Internal Door Fittings

Bathroom thumb turn, concealed fix P8178T



P8178T Bathroom thumb turn, concealed fix
P8178TUS Bathroom thumb turn, concealed fix
(USA spindle on diamond)
Size: knob 35mm x 23mm; 1 3/8" x 15/16"
Rose Ø: 35mm; 1 3/8"

Shown here in **MBC** Matt black chrome finish.

Must be used complete with coin release.



42

Bathroom coin release, concealed fix P8178CR

P8178CR Bathroom coin release, concealed fix
Size Ø: 35mm; 1 3/8"

Shown here in **MBC** Matt black chrome finish.



NL
Non lacquered brass



PB
Polished brass



CP
Chrome plate



PN
Polished nickel



SSF
Stainless steel
finish

Internal Door Fittings

Bathroom thumb turn, concealed fix P8073T



P8073T Bathroom thumb turn, concealed fix
Size: knob 32mm x 20mm; 1 1/4" x 3/4"
Backplate: 55mm x 55mm; 2 3/16" x 2 3/16"

Shown here in **SSF** Stainless steel finish.

Must be used complete with coin release.



Bathroom coin release, concealed fix P8073CR



P8073CR Bathroom coin release, concealed fix
Backplate: 55mm x 55mm; 2 3/16" x 2 3/16"

Shown here in **SSF** Stainless steel finish.



ABU
Antique brass
unlacquered



BGG
Brushed gold
gloss



BGM
Brushed gold
matt



MBC
Matt black
chrome



CTB
City bronze

Internal Door Fittings

Bathroom thumb turn, concealed fix P8072T



P8072T Bathroom thumb turn, concealed fix
Size: knob 32mm x 20mm; 1 1/4" x 3/4"
Backplate: 55mm x 55mm; 2 3/16" x 2 3/16"

Shown here in **ABU** Antique brass unlacquered finish.

Must be used complete with coin release.



Bathroom coin release, concealed fix P8072CR



P8072CR Bathroom coin release, concealed fix
Backplate: 55mm x 55mm; 2 3/16" x 2 3/16"

Shown here in **ABU** Antique brass unlacquered finish.



NL
Non lacquered brass



PB
Polished brass



CP
Chrome plate



PN
Polished nickel



SSF
Stainless steel
finish

Internal Door Fittings

Bathroom thumb turn, concealed fix P8161T



P8161T Bathroom thumb turn, concealed fix
Size: knob 35mm x 23mm; 1 3/8" x 15/16"
Rose Ø: 35mm; 1 3/8"

Shown here in **PB** Polished brass finish.

Must be used complete with coin release.



Bathroom coin release, concealed fix P8161CR



P8161CR Bathroom coin release, concealed fix
Rose Ø: 35mm; 1 3/8"

Shown here in **PB** Polished brass finish.



ABU
Antique brass
unacquered



BGG
Brushed gold
gloss



BGM
Brushed gold
matt



MBC
Matt black
chrome



CTB
City bronze

Internal Door Fittings

Bathroom thumb turn, concealed fix P8162T

P8162T Bathroom thumb turn, concealed fix
Size: knob 35mm x 24mm; 1 3/8" x 15/16"
Rose Ø: 35mm; 1 3/8"

Shown here in **ABU** Antique brass unlacquered finish.

Must be used complete with coin release.



Bathroom coin release, concealed fix P8162CR

P8162CR Bathroom coin release, concealed fix
Rose Ø: 35mm; 1 3/8"

Shown here in **ABU** Antique brass unlacquered finish.



NL
Non lacquered brass



PB
Polished brass



CP
Chrome plate



PN
Polished nickel



SSF
Stainless steel
finish

Internal Door Fittings

Bathroom thumb turn, concealed fix P8150-T

P8150T Bathroom thumb turn, concealed fix
Rose Ø: 51mm; 2"

P8150CR Bathroom coin release, concealed fix
Rose Ø: 51mm; 2"

Supplied individually.

Shown here in **SSF**Stainless steel finish.

Must be used complete with coin release.



Lock thumb turn for 5mm or 8mm follower P8171T

P8171T Lock thumb turn for 5mm or 8mm follower
P8171TUS Lock thumb turn for 5mm or 8mm follower
(USA spindle on diamond)
Size: knob 32mm x 20mm; 1 1/4" x 3/4"
Rose Ø: 35mm; 1 3/8"

Shown here in **BRZ** Bronze finish.



Lock thumb turn for 5mm or 8mm follower P8172T

P8172T Lock thumb turn for 5mm or 8mm follower
P8172TUS Lock thumb turn for 5mm or 8mm follower
(USA spindle on diamond)
Size: knob 32mm x 20mm; 1 1/4" x 3/4"
Rose Ø: 35mm; 1 3/8"

Shown here in **PN** Polished nickel finish.



ABU
Antique brass
unlacquered



BGG
Brushed gold
gloss



BGM
Brushed gold
matt



MBC
Matt black
chrome



CTB
City bronze

Internal Door Fittings

Round covered escutcheon P2395

P2395 Round covered escutcheon
Size Ø: 32mm; 1 1/4"

Shown here in **ABU** Antique brass unlacquered finish.

Available in **NL, PB, CP, PN, SCP, SN, SSF, ABU, BRZ, BGG, BGM, MBC, CTB** finishes



Lever lock concealed fix escutcheon P8195

P8195 Lever lock concealed fix escutcheon
Size Ø: 51mm; 2"

Shown here in **PB** Polished brass finish.



Euro concealed fix escutcheon P8196

P8196 Euro concealed fix escutcheon
Size Ø: 51mm; 2"

Shown here in **PN** Polished nickel finish.



NL
Non lacquered brass



PB
Polished brass



CP
Chrome plate



PN
Polished nickel



SSF
Stainless steel
finish

Internal Door Fittings

Euro concealed fix escutcheon P8182

Euro concealed fix escutcheon P8192

P8182 Euro concealed fix escutcheon
Size Ø: 51mm; 2"



P8192 Euro concealed fix escutcheon
Size Ø: 51mm; 2"



Lever lock concealed fix escutcheon P8183

Lever lock concealed fix escutcheon P8193

P8183 Lever lock concealed fix escutcheon
Size Ø: 51mm; 2"



P8193 Lever lock concealed fix escutcheon
Size Ø: 51mm; 2"



Lever lock concealed fix escutcheon P8184

Lever lock concealed fix escutcheon P8194

P8184 Lever lock concealed fix escutcheon
Size Ø: 38mm; 1 1/2"



P8194 Lever lock concealed fix escutcheon
Size Ø: 38mm; 1 1/2"



ABU
Antique brass
unlacquered



BGG
Brushed gold
gloss



BGM
Brushed gold
matt



MBC
Matt black
chrome



CTB
City bronze

Internal Door Fittings

Round covered escutcheon P2398

P2398 Round covered escutcheon
Size \varnothing : 32mm; 1 1/4"

Available in NL, PB, CP, PN, SCP, SN, ABU, BRZ finishes



Raised oval covered escutcheon P8102

P8102 Raised oval covered escutcheon
Size: 62mm x 30mm; 2 1/2" x 1 1/4"

Available in NL, PB, CP, PN, SCP, SN, ABU, BRZ finishes



NL
Non lacquered brass



PB
Polished brass



CP
Chrome plate



PN
Polished nickel



SSF
Stainless steel
finish

Internal Door Fittings

Lever lock escutcheon P8027

P8027 Lever lock escutcheon
Size: 55mm x 55mm; 2 3/16" x 2 3/16"



Euro escutcheon P8028

P8028 Euro escutcheon
Size: 55mm x 55mm; 2 3/16" x 2 3/16"



Lever lock escutcheon P8037

P8037 Lever lock escutcheon
Size: 55mm x 55mm; 2 3/16" x 2 3/16"



Euro escutcheon P8038

P8038 Euro escutcheon
Size: 55mm x 55mm; 2 3/16" x 2 3/16"



ABU
Antique brass
unlacquered



BGG
Brushed gold
gloss



BGM
Brushed gold
matt



MBC
Matt black
chrome



CTB
City bronze

Cupboard Fittings

Oval cupboard knob P783



P783 Oval cupboard knob
Knob Ø: = 20mm x 32mm; 3/4" x 1 1/4"

Shown here in **NL** Non lacquered brass finish.



NL
Non lacquered brass



PB
Polished brass



CP
Chrome plate



PN
Polished nickel



SSF
Stainless steel
finish



ABU
Antique brass
unlacquered

Cupboard Fittings

Raised cupboard knob P784



P784 Raised cupboard knob
Knob Ø: = 24mm x 32mm; 1" x 1 1/4"

Shown here in **PN** Polished nickel finish.



BRZ
Bronze



BGG
Brushed gold
gloss



BGM
Brushed gold
matt



MBC
Matt black
chrome



CTB
City bronze

Cupboard Fittings

Plain ball cupboard knob P786



P786-A, B, C Plain ball cupboard knob
Cupboard knob A size Ø 19mm; 3/4"
Cupboard knob B size Ø 25mm; 1" (illustrated)
Cupboard knob C size Ø 32mm; 1 1/4"

Shown here in **ABU** Antique brass unlacquered finish.



NL
Non lacquered brass



PB
Polished brass



CP
Chrome plate



PN
Polished nickel



SSF
Stainless steel
finish



ABU
Antique brass
unlacquered

Cupboard Fittings

Plain ball cupboard knob P796



P796-A, B, C Plain ball cupboard knob
Cupboard knob A size Ø 19mm; 3/4" (illustrated)
Cupboard knob B size Ø 25mm; 1"
Cupboard knob C size Ø 32mm; 1 1/4"

Shown here in **BRZ** Bronze finish.



BRZ
Bronze



BGG
Brushed gold
gloss



BGM
Brushed gold
matt



MBC
Matt black
chrome



CTB
City bronze

Cupboard Fittings

Plain bun cupboard knob P788



P788-B, C Plain bun cupboard knob
Cupboard knob B size Ø 25mm; 1"
Cupboard knob C size Ø 32mm; 1 1/4" (illustrated)

Shown here in **CTB** City bronze finish.



NL
Non lacquered brass



PB
Polished brass



CP
Chrome plate



PN
Polished nickel



SSF
Stainless steel
finish



ABU
Antique brass
unlacquered

Cupboard Fittings

Plain bun cupboard knob P798



P798-B, C Plain bun cupboard knob
Cupboard knob B size Ø 25mm; 1"
Base Ø 29mm; 1 1/8"
Cupboard knob C size Ø 32mm; 1 1/4" (illustrated)
Base Ø 38mm; 1 1/2"

Shown here in **BGG** Brushed gold gloss finish.



BRZ
Bronze



BGG
Brushed gold
gloss



BGM
Brushed gold
matt



MBC
Matt black
chrome



CTB
City bronze

Cupboard Fittings

Reeded ball cupboard knob P787



P787-A, B, C Reeded ball cupboard knob
Cupboard knob A size Ø 19mm; 3/4" (illustrated)
Cupboard knob B size Ø 25mm; 1"
Cupboard knob C size Ø 32mm; 1 1/4"

Shown here in **BRZ** Bronze finish.



NL
Non lacquered brass



PB
Polished brass



CP
Chrome plate



PN
Polished nickel



SSF
Stainless steel
finish



ABU
Antique brass
unlacquered

Cupboard Fittings

Reeded ball cupboard knob P797



P797-A, B, C Reeded ball cupboard knob
Cupboard knob A size Ø 19mm; 3/4"
Cupboard knob B size Ø 25mm; 1"
Cupboard knob C size Ø 32mm; 1 1/4" (illustrated)

Shown here in **SSF** Stainless steel finish.



BRZ
Bronze



BGG
Brushed gold
gloss



BGM
Brushed gold
matt



MBC
Matt black
chrome



CTB
City bronze

Cupboard Fittings

Reeded bun cupboard knob P789



P789-B, C Reeded bun cupboard knob
Cupboard knob B size Ø 25mm; 1"
Cupboard knob C size Ø 32mm; 1 1/4" (illustrated)

Shown here in **BGG** Brushed gold gloss finish.

60



NL
Non lacquered brass



PB
Polished brass



CP
Chrome plate



PN
Polished nickel



SSF
Stainless steel
finish



ABU
Antique brass
unlacquered

Cupboard Fittings

Reeded bun cupboard knob P799



P799-B, C Reeded bun cupboard knob
Cupboard knob B size Ø 25mm; 1" (illustrated)
Base Ø 29mm; 1 1/8"
Cupboard knob C size Ø 32mm; 1 1/4"
Base Ø 38mm; 1 1/2"

Shown here in **NL** Non lacquered finish finish.



BRZ
Bronze



BGG
Brushed gold
gloss



BGM
Brushed gold
matt



MBC
Matt black
chrome



CTB
City bronze

Cupboard Fittings

Cupboard pull (bolt through) U798

U798 Cupboard pull (bolt through)
Projection: = 35mm; 1³/₈"

Available in NL, PB, CP, PN, SCP, SN finishes



Fastener P4331

P4331 Fastener
Plate length: = 57mm; 2 1/4"
Arm length: = 57mm; 2 1/4"

Available in NL, PB, CP, PN, SCP, SN, ABU,
BRZ finishes



62

Button on plate P47-C

P47-C Button on plate
Size: = 51mm; 2" Ø

Available in PB, CP finishes



NL
Non lacquered brass



PB
Polished brass



CP
Chrome plate



PN
Polished nickel



SCP
Satin chrome

Entrance Door Fittings



P7007 Ring door knocker in PN Polished nickel finish



SN
Satin nickel



ABU
Antique brass
unlacquered



BRZ
Bronze

Cadair Centre door knob P2132-A, B

P2132-A Centre door knob (illustrated)
Knob diameter: 88mm; 3 7/16"
Rose diameter: 69mm; 2 11/16"

P2132-B Centre door knob
Knob diameter: 88mm; 3 7/16"
Rose diameter: 86mm; 3 3/8"

Shown here in **SSF** Stainless steel finish.



NL
Non lacquered brass



PB
Polished brass



CP
Chrome plate



PN
Polished nickel



SSF
Stainless steel
finish

Snowden Centre door knob P2134-A, B

P2134-A Centre door knob (illustrated)
Knob diameter: 88mm; 3 ⁷/₁₆"
Rose diameter: 69mm; 2 ¹¹/₁₆"

P2134-B Centre door knob
Knob diameter: 88mm; 3 ⁷/₁₆"
Rose diameter: 86mm; 3 ³/₈"

Shown here in **CTB** City bronze finish.



ABU
Antique brass
unacquered



BGG
Brushed gold
gloss



BGM
Brushed gold
matt



MBC
Matt black
chrome



CTB
City bronze

Entrance Door Fittings

Octagonal centre door knob P2130-B, C

P2130-B Octagonal centre door knob (illustrated)
Knob diameter: 67mm; 2 5/8"
Rose diameter: 83mm; 3 1/4"

Available in NL, PB, CP, PN, SCP, SN finishes

P2130-C Octagonal centre door knob
Knob diameter: 102mm; 4"
Rose diameter: 115mm; 4 1/2"

Available in NL, PB, CP, PN, SCP, SN, ABU,
BRZ, MBC finishes



NL
Non lacquered brass



PB
Polished brass



CP
Chrome plate



PN
Polished nickel



SCP
Satin chrome

Entrance Door Fittings

Internal letter flap cover P7580

P7580 Internal letter flap cover
Size: 305mm x 83mm; 12" x 3 1/4"

For use with P7500 / P7502

Available in **NL, PB, CP, PN, SCP, SN, ABU, BRZ** finishes



Internal letter flap cover P7581, P7584

P7581 Internal letter flap cover
Size: 305mm x 83mm; 12" x 3 1/4"

For use with P7500 / P7502

Available in **NL, PB, CP, PN, SCP, SN, SSF, ABU, BRZ, BGG, BGM, MBC, CTB** finishes



P7584 Internal letter flap cover
Size: 380mm x 108mm; 15" x 4 1/4"

For use with P7504

Available in **NL, PB, CP, PN, SCP, SN, ABU, BRZ, MBC** finishes



SN
Satin nickel



ABU
Antique brass
unacquered



BRZ
Bronze



MBC
Matt black
chrome

Entrance Door Fittings

Letter plates P7500, P7502, P7504

P7500 Letter plate
 Size overall: 260mm x 86mm; 10 1/4" x 3 3/8"
 Size aperture: 203mm x 45mm; 8" x 1 3/4"

Shown here in **NL** Non lacquered brass finish.
 Available in NL, PB, CP, PN, SCP, SN,
 ABU, BRZ finishes



P7502 Letter plate (illustrated)
 Size overall: 305mm x 102mm; 12" x 4"
 Size aperture: 229mm x 58mm; 9" x 2 1/4"

Available in NL, PB, CP, PN, SCP, SN,
 SSF, ABU, BRZ, BGG, BGM, MBC,
 CTB finishes

P7504 Large letter plate (illustrated)
 Size overall: 380mm x 127mm; 15" x 5"
 Size aperture: 300mm x 70mm;
 11 3/4" x 2 3/4"

Shown here in **MBC** Matt black chrome finish.
 Available in NL, PB, CP, PN, SCP, SN,
 ABU, BRZ, MBC finishes



NL
 Non lacquered
 brass



PB
 Polished brass



CP
 Chrome plate



PN
 Polished nickel



SCP
 Satin chrome



SN
 Satin nickel



SSF
 Stainless steel
 finish

Entrance Door Fittings

Ring door knocker P7007

P7007 Ring door knocker
Overall height: 120mm; 4 3/4"
Width: 105mm; 4 1/8"
Suits doors up to 90mm; 3 1/2" thick.

Shown here in **BRZ** Bronze finish.
Available in NL, PB, CP, PN, SCP, SN,
ABU, BRZ finishes



Doctor's door knocker P7009

P7009 Doctor's door knocker
Overall height: 198mm; 7 3/4"
Width: 64mm; 2 1/2"

Shown here in **ABU** Antique brass
unlacquered finish.
Available in NL, PB, CP, PN, SCP, SN,
SSF, ABU, BRZ, BGG, BGM, MBC,
CTB finishes



ABU
Antique brass
unlacquered



BRZ
Bronze



BGG
Brushed gold
gloss



BGM
Brushed gold
matt



MBC
Matt black
chrome



CTB
City bronze

Entrance Door Fittings

Letter box protector P7585
For use with letter plate P7500

P7585 Letter box protector - small
Height: 110mm; 4 5/16"
Width: 265mm; 10 1/2"

Available in NL, PB, CP, PN, SCP, SN,
ABU, BRZ finishes



Letter box protector P7587
For use with letter plate P7502

P7587 Letter box protector - medium
Height: 127mm; 5"
Width: 296mm; 11 11/16"

Available in NL, PB, CP, PN, SCP, SN,
ABU, BRZ finishes



Letter box protector P7586
For use with letter plate P7504

P7586 Letter box protector - large
Height: 140mm; 5 1/2"
Width: 372mm; 14 5/8"

Available in NL, PB, CP, PN, SCP, SN,
ABU, BRZ, MBC finishes



NL
Non lacquered brass



PB
Polished brass



CP
Chrome plate



PN
Polished nickel



SCP
Satin chrome

Entrance Door Fittings

Cylinder latch pull P7800

P7800 Cylinder latch pull
Height: 86mm; 3 3/8"
Width: 45mm; 1 3/4"
Projection: 27mm; 1"

Available in NL, PB, CP, PN, SCP, SN,
ABU, BRZ, MBC finishes



Cylinder latch pull set - Euro profile P7802

P7802 Cylinder latch pull set - euro profile
Height: 91mm; 3 5/8"
Width: 54mm; 2 1/8"
Projection: 28mm; 1 1/8"

Available in NL, PB, CP, PN, SCP, SN,
ABU, BRZ, MBC finishes



SN
Satin nickel



ABU
Antique brass
unlaquered



BRZ
Bronze



MBC
Matt black
chrome

Entrance Door Fittings

Bank pattern door chain inc. keeper P4006-A

P4006-A Bank pattern door chain inc. keeper
Frame: 152mm x 45mm; 6" x 1 3/4"
Chain: 170mm; 6 11/16"

Steel chain and knob

Available in NL, PB, CP, PN, SCP,
SN, BRZ finishes



Door chain P4008

72

P4008 Door chain
Frame: 89mm x 32mm; 3 1/2" x 1 1/4"
Chain: 170mm; 6 11/16"

Steel chain and knob

Available in NL, PB, CP, PN, SCP,
SN, BRZ finishes



NL
Non lacquered brass



PB
Polished brass



CP
Chrome plate



PN
Polished nickel



SCP
Satin chrome

Entrance Door Fittings

Security door bolt P4024

P4024 Security door bolt
Bolt throw: 18mm; 3/4"

Includes keeper plate and keyhole shield.

Available in **PB**, **CP**, **PN**, **ABU**, **BRZ** finishes



Security bolt key P4026-XX

P4026 Security bolt key
Size: 89mm; 3 1/2"



SN
Satin nickel



ABU
Antique brass
unlacquered



BRZ
Bronze

Entrance Door Fittings

Door numerals

P7590 Door numeral "0"
Height: 84mm; 3 5/16"
Width: 53mm; 2 1/8"

Available in NL, PB, CP, PN, SCP,
SN, ABU, BRZ finishes



P7591 Door numeral "1"
Height: 84mm; 3 5/16"
Width: 31mm; 1 1/4"

Available in NL, PB, CP, PN, SCP,
SN, ABU, BRZ finishes



P7592 Door numeral "2"
Height: 84mm; 3 5/16"
Width: 55mm; 2 3/16"

Available in NL, PB, CP, PN, SCP,
SN, ABU, BRZ finishes



P7593 Door numeral "3"
Height: 84mm; 3 5/16"
Width: 54mm; 2 1/8"

Available in NL, PB, CP, PN, SCP,
SN, ABU, BRZ finishes



P7594 Door numeral "4"
Height: 84mm; 3 5/16"
Width: 58mm; 2 5/16"

Available in NL, PB, CP, PN, SCP,
SN, ABU, BRZ finishes



NL
Non lacquered brass



PB
Polished brass



CP
Chrome plate



PN
Polished nickel



SCP
Satin chrome

Entrance Door Fittings

Door numerals

P7595 Door numeral "5"
Height: 84mm; 3 5/16"
Width: 55mm; 2 3/16"

Available in NL, PB, CP, PN, SCP,
SN, ABU, BRZ finishes



P7596 Door numeral "6"
Height: 84mm; 3 5/16"
Width: 54mm; 2 1/8"

Available in NL, PB, CP, PN, SCP,
SN, ABU, BRZ finishes



P7597 Door numeral "7"
Height: 84mm; 3 5/16"
Width: 55mm; 2 3/16"

Available in NL, PB, CP, PN, SCP,
SN, ABU, BRZ finishes



P7598 Door numeral "8"
Height: 84mm; 3 5/16"
Width: 54mm; 2 1/8"

Available in NL, PB, CP, PN, SCP,
SN, ABU, BRZ finishes



P7599 Door numeral "9"
Height: 84mm; 3 5/16"
Width: 54mm; 2 1/8"

Available in NL, PB, CP, PN, SCP,
SN, ABU, BRZ finishes



SN
Satin nickel



ABU
Antique brass
unlacquered



BRZ
Bronze

Casement Window Fittings



Casement Window Fittings



P4518-B Casement stay in NL Non lacquered brass finish, **P4514-B** Casement stay in PN Polished nickel finish and **P4512-B** Casement stay in NL Non lacquered brass finish

Casement Window Fittings

Casement stays P4512-A, B, C

P4512-A, B, C Casement stay

Length: A = 203mm; 8"
B = 254mm; 10"
C = 305mm; 12"

Shown here in **NL** Non lacquered brass finish.



Available in NL, PB, CP, PN, SCP,
SN, ABU, BRZ finishes

Casement stays P4514-B, C

78

P4514-B, C Casement stay

Length: B = 254mm; 10"
C = 305mm; 12"

Shown here in **PN** Polished nickel finish.



Available in NL, PB, CP, PN, SCP,
SN, ABU, BRZ finishes



NL
Non lacquered brass



PB
Polished brass



CP
Chrome plate



PN
Polished nickel



SCP
Satin chrome

Casement Window Fittings

Casement stay P4518-B

P4518-B Casement stay
Length: = 254mm; 10"

Shown here in **NL** Non lacquered brass finish.



Available in NL, PB, CP, PN, SCP,
SN, ABU, BRZ finishes



SN
Satin nickel



ABU
Antique brass
unlacquered



BRZ
Bronze

Casement Window Fittings

Casement stay P4293-A

P4293-A Casement stay
Length: = 254mm; 10"

Available in NL, PB, CP, PN, SCP,
SN, ABU, BRZ finishes



Sliding pattern casement stay P4536-A, B For inward opening windows

P4536-A, B Sliding pattern casement stay
Length: A = 254mm; 10"
B = 305mm; 12"

Size A available in NL, PB, CP, SCP,
SN, ABU, BRZ finishes

Size B available in PB, CP, SCP,
ABU, BRZ finishes



NL
Non lacquered brass



PB
Polished brass



CP
Chrome plate



PN
Polished nickel



SCP
Satin chrome

Casement Window Fittings

Sliding pattern casement stay P4553-A, B

P4553-A, B Sliding pattern casement stay

Length: A = 254mm; 10"
B = 305mm; 12"

Available in NL, PB, CP, PN, SCP, SN, ABU, BRZ finishes



Casement stay locking pin P4515-LP

P4515-LP Casement stay locking pin

Available in NL, PB, CP, PN, SCP, SN, ABU, BRZ finishes

P4516-K Key



SN
Satin nickel



ABU
Antique brass
unlacquered



BRZ
Bronze

Casement Window Fittings

Casement fastener P4511-HP or MP

P4511-HP or MP Casement fastener (Illustrated)
P4511L-HP or MP Casement fastener (locking)
P4511S-MP Weatherseal casement fastener
P4511LS-MP Weatherseal casement fastener (locking)
Handle: = 100mm; 4"

Shown here with hook plate in
ABU Antique brass unlacquered finish.

Available in NL, PB, CP, PN, SCP,
SN, ABU, BRZ finishes



NL
Non lacquered brass



PB
Polished brass



CP
Chrome plate



PN
Polished nickel



SCP
Satin chrome

Casement Window Fittings

Casement fastener P4517-HP or MP

P4517-HP or MP Casement fastener (Illustrated)
P4517L-HP or MP Casement fastener (locking)
P4517S-MP Weatherseal casement fastener
P4517LS-MP Weatherseal casement fastener (locking)
Handle: = 90mm; 3 1/2"

Shown here with mortice plate in
BRZ Bronze finish.

Available in NL, PB, CP, PN, SCP,
SN, ABU, BRZ finishes



SN
Satin nickel



ABU
Antique brass
unlacquered



BRZ
Bronze

Casement Window Fittings

Casement fastener P4527-HP or MP

P4527-HP or MP Casement fastener (Illustrated)
P4527L-HP or MP Casement fastener (locking)
P4527S-MP Weatherseal casement fastener
P4527LS-MP Weatherseal casement fastener (locking)
Handle: = 100mm; 4"

Shown here with hook plate.

Available in NL, PB, CP, PN, SCP,
SN, ABU, BRZ finishes



NL
Non lacquered brass



PB
Polished brass



CP
Chrome plate



PN
Polished nickel



SCP
Satin chrome

Casement Window Fittings

Casement fastener P4513-HP or MP

P4513-HP or MP Casement fastener

P4513S-MP Weatherseal casement fastener

Handle: = 108mm; 4 1/4"

Shown here with hook plate and mortice plate.

Available in NL, PB, CP, PN, SCP,
SN, ABU, BRZ finishes



SN
Satin nickel



ABU
Antique brass
unlacquered



BRZ
Bronze

Casement Window Fittings

Casement fastener P4513-W

P4513-W Casement fastener, wedge pattern
P4513S-W Weatherseal casement fastener, wedge pattern
Handle: = 108mm; 4 1/4"

Available in NL, PB, CP, PN, SCP,
SN, ABU, BRZ finishes



NL
Non lacquered brass



PB
Polished brass



CP
Chrome plate



PN
Polished nickel



SCP
Satin chrome

Casement Window Fittings

Casement fastener P4525-HP or MP

P4525-HP or MP Casement fastener

P4525S-MP Weatherseal casement fastener

Handle: = 95.5mm; 3 3/4"

Shown here with hook plate and mortice plate.

P4525-HP or MP available in
NL, PB, CP, PN, SCP, SN, ABU, BRZ finishes

P4525S-MP available in
NL, PB, CP, SCP, ABU, BRZ finishes



SN
Satin nickel



ABU
Antique brass
unlacquered



BRZ
Bronze

Sash Window Fittings

Brighton sash fastener P4925

P4925 Brighton sash fastener
Length: = 57mm; 2 1/4"

Available in NL, PB, CP, PN, SCP,
SN, ABU, BRZ finishes



Brighton sash fastener P4925-L

P4925-L Brighton sash fastener, locking
Length: = 57mm; 2 1/4"

Available in NL, PB, CP, PN, SCP,
SN, ABU, BRZ finishes



88

Fitch sash fastener P6131, P6131-L

P6131 Fitch sash fastener, locking
P6131-L Fitch sash fastener, locking
Length: = 70mm; 2 3/4"

Available in NL, PB, CP, PN, SCP,
SN, ABU, BRZ finishes



NL
Non lacquered brass



PB
Polished brass



CP
Chrome plate



PN
Polished nickel



SCP
Satin chrome

Sash Window Fittings

Fitch sash fastener P6132-L

P6132-L Sash fastener, locking
Length: = 70mm; 2 3/4"

Narrow pattern for use on double glazed sash windows.

Available in NL, PB, CP, PN, SCP, SN, ABU, BRZ finishes



Straight arm sash fastener P6278

P6278 Straight arm sash fastener
P6278L Straight arm sash fastener, locking
Length: = 70mm; 2 3/4"

Narrow pattern for use on double glazed sash windows.

Available in NL, PB, CP, PN, SCP, SN, ABU, BRZ finishes



Straight arm sash fastener P6276-B

P6276-B Straight arm sash fastener, plain knob
P6276L-B Straight arm sash fastener, plain knob, locking
Length: = 70mm; 2 3/4"

Available in NL, PB, CP, PN, SCP, SN, ABU, BRZ finishes



SN
Satin nickel



ABU
Antique brass unlacquered



BRZ
Bronze

Sash Window Fittings

Straight arm sash fastener P6277-B

P6277-B Straight arm sash fastener
P6277L-B Straight arm sash fastener, locking
P6277LN-B Narrow straight arm sash fastener, locking
 Length: = 70mm; 2 3/4"

Available in NL, PB, CP, PN, SCP, SN, ABU, BRZ finishes



Straight arm sash fastener P6279

P6279 Straight arm sash fastener
P6279L Straight arm sash fastener, locking
P6279LN Narrow straight arm sash fastener, locking
 Length: = 70mm; 2 3/4"

Available in NL, PB, CP, PN, SCP, SN, ABU, BRZ finishes



NL
Non lacquered brass



PB
Polished brass



CP
Chrome plate



PN
Polished nickel



SCP
Satin chrome

Sash Window Fittings

Sash lift P2577

P2577 Sash lift
Projection: = 32mm; 1 1/4"

Available in NL, PB, CP, PN, SCP,
SN, ABU, BRZ finishes



Sash lift P2659

P2659 Sash lift
Size: = 51mm; 2"

Available in NL, PB, CP, PN, SCP,
SN, ABU, BRZ finishes



Sash lift P2636

P2636 Sash lift, extruded
Size: = 64mm; 2 1/2"

Available in NL, PB, CP, PN, SCP,
SN, ABU, BRZ finishes



Pull/sash handle P844-A, B

P844-A, B Pull/sash handle
Height: P844-A = 127mm; 5"
P844-B = 152mm; 6"
Projection: P844-A = 32mm; 1 1/4"
P844-B = 38mm; 1 1/2"

Available in NL, PB, CP, PN, SCP, SN,
ABU, BRZ finishes



SN
Satin nickel



ABU
Antique brass
unlacquered



BRZ
Bronze

Sash Window Fittings

Sash screw P1170, P1175



P1170-C Sash screw ($\frac{3}{8}$ " thread \varnothing)
 Size: = 76mm; 3"
P1175-C Sash screw ($\frac{5}{16}$ " thread \varnothing)
 Size: = 76mm; 3"

P1170-C available in URB finish
 P1175-C available in URB, CP, SCP finishes

Weeks' patent sash stop P6059



P6059 Weeks' patent sash stop
 Size: = 70mm x 18mm; $2\frac{3}{4}$ " x $\frac{3}{4}$ "

Available in NL, PB, CP, PN, SCP, SN,
 ABU, BRZ, BGG finishes

Acorn sash stop P268-B



P268-B Acorn sash stop
 (Supplied without chain)

Available in URB, SCP finishes

92

Bartholomew's sash stop P4884-L



P4884-L Bartholomew's sash stop, locking
 Size: = 44mm x 20mm; $1\frac{3}{4}$ " x $\frac{3}{4}$ "
 Max depth: 35mm; $1\frac{3}{8}$ "

Available in NL, PB, CP, PN, SCP, SN,
 ABU, BRZ, BGG finishes

Sash pivot P2146-A



P2146-A Sash pivot
 Size: = 51mm x 22mm; 2 " x $\frac{7}{8}$ "

Available in URB finish



NL
 Non lacquered brass



PB
 Polished brass



CP
 Chrome plate



PN
 Polished nickel



SCP
 Satin chrome

Additional window Fittings

Cleat hook P4144-B



P4144-B Cleat hook
Size: = 76mm; 3"

Available in NL, PB, CP, PN, SCP, SN finishes

Cord handles P6759



P6759-HD Dark wood cord handles
P6759-HL Light wood cord handles

Fanlight catch P1972-A



P1972-A Fanlight catch
Size: = 51mm x 29mm; 2" x 1 1/8"

Available in NL, PB, CP, PN, SCP, SN, ABU, BRZ finishes

Sash hook P8623



P8623 Sash hook
Internal Ø: = 25mm; 1"

Available in NL, PB, CP, SCP, SN, ABU, BRZ finishes



SN
Satin nickel



ABU
Antique brass
unlacquered



BRZ
Bronze



BGG
Brushed gold
gloss



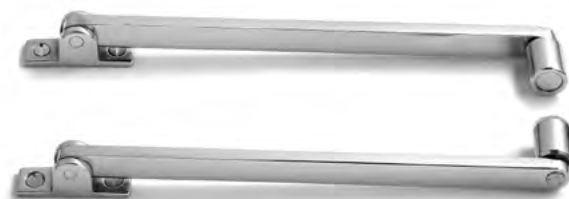
URB
Urban brass

Additional window Fittings

Roller stays P4360

P4360 Roller stays (pair)
Length: = 203mm; 8"

Available in NL, PB, CP, PN, SCP finishes



Window espagnolette handle
P4611-L & P4611-R

P4611-L Window espagnolette handle, left hand

P4611-R Window espagnolette handle, right hand

Handle length: = 100mm; 4"

Available in NL, PB, CP, PN, SCP, SN, ABU, BRZ finishes

Backplate design is due to change to a narrower rectangular format in 2020



P4611-L

P4611-R



NL
Non lacquered brass



PB
Polished brass



CP
Chrome plate



PN
Polished nickel



SCP
Satin chrome

Additional window Fittings

Window espagnolette handle P4626

P4626 Window espagnolette handle
Handle length: = 100mm; 4"

Available in NL, PB, CP, PN, SCP, SN,
ABU, BRZ finishes

Backplate design is due to change to a
narrower rectangular format in 2020



French window fastener (reversible) P4526

P4526 French window fastener (reversible)
Handle length: = 100mm; 4"

Available in NL, PB, CP, PN, SCP, ABU, BRZ finishes

Backplate design is due to change to a
narrower rectangular format in 2020



SN
Satin nickel



ABU
Antique brass
unlacquered



BRZ
Bronze

Additional window Fittings

Window espagnolette handle
P4627-L & P4627-R

P4627-L Window espagnolette handle,
left hand
P4627-R Window espagnolette handle,
right hand
Handle length: = 108mm; 1 1/4"

Available in NL, PB, CP, PN, SCP, SN,
ABU, BRZ finishes

Backplate design is due to change to a
narrower rectangular format in 2020



P4627-L

P4627-R

Window espagnolette handle P4628

P4628 Window espagnolette handle
Handle length: = 90mm; 3 1/2"

Available in NL, PB, CP, PN, SCP, SN,
ABU, BRZ finishes

Backplate design is due to change to a
narrower rectangular format in 2020



NL
Non lacquered brass



PB
Polished brass



CP
Chrome plate



PN
Polished nickel



SCP
Satin chrome

Additional door fittings

Push plate P8103

P8103 Push plate
Height: = 285mm; 11 1/4"
Width: = 67mm; 2 5/8"

Available in NL, PB, CP, PN, SCP,
ABU, BRZ finishes



Pull handle on plate P8163, P8164

P8163 Pull handle on plate
Height: = 285mm; 11 1/4"
Width: = 67mm; 2 5/8"
Bolt through (invisible fix)

P8164 Pull handle on plate
Height: = 285mm; 11 1/4"
Width: = 67mm; 2 5/8"
Visible fix screws (not illustrated)

P8163 available in NL, PB, CP,
PN, SCP, ABU, BRZ finishes

P8164 available in NL, PB, CP,
ABU, BRZ finishes



Pull handle P8263

P8263 Pull handle
Height: = 250mm; 9 3/4"
Width: = 40mm; 1 1/2"
Visible fix screws

Available in NL, PB, CP, PN, SCP,
SN, ABU, BRZ finishes



SN
Satin nickel



ABU
Antique brass
unlacquered



BRZ
Bronze

Additional door Fittings

Pull handle P8099-A

P8099-A Pull handle
Height: = 152mm; 6" overall
Projection: = 35mm; 1 3/8"

Available in NL, PB, CP, PN, SCP, SN,
ABU, BRZ finishes



Pull/sash handle P844-A, B

P844-A, B Pull/sash handle
Height: P844-A = 127mm; 5"
P844-B = 152mm; 6"
Projection: P844-A = 32mm; 1 1/4"
P844-B = 38mm; 1 1/2"

Available in NL, PB, CP, PN, SCP, SN,
ABU, BRZ finishes



Octagonal door knob, unsprung P2182-B

P2182-B Octagonal door knob, unsprung
Knob Ø: 67mm; 2 5/8"
Rose Ø: 83mm; 3 1/4"

Available in NL, PB, CP, PN, SCP finishes



NL
Non lacquered brass



PB
Polished brass



CP
Chrome plate



PN
Polished nickel



SCP
Satin chrome

Additional door fittings

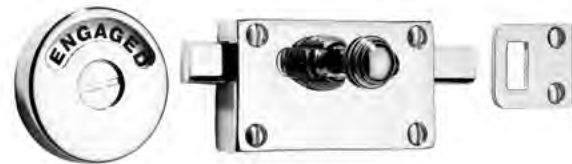
Indicator bolt P7303



P7303 Indicator bolt (plain knob)
Indicator Ø: = 48mm; 1 7/8"
Main body: = 75mm x 43mm; 3" x 1 3/4"

Available in NL, PB, CP, PN, SCP, SN finishes

Indicator bolt P7305



P7305 Indicator bolt (reeded knob)
Indicator Ø: = 48mm; 1 7/8"
Main body: = 75mm x 43mm; 3" x 1 3/4"

Available in NL, PB, CP, PN, SCP, SN, MBC finishes

Indicator bolt P7301



P7301 Indicator bolt (flat knob)
Indicator Ø: = 48mm; 1 7/8"
Main body: = 75mm x 43mm; 3" x 1 3/4"

Available in NL, PB, CP, PN, SCP, SN, BRZ finishes



SN
Satin nickel



ABU
Antique brass
unlacquered



BRZ
Bronze



MBC
Matt black
chrome

Additional door Fittings

Surface bolt P7349-A, B, C or D

P7349-A, B, C or D Surface bolt

Length: A = 102mm; 4"
B = 152mm; 6"
C = 203mm; 8"
D = 254mm; 10"

3 types of keeper included.
Suitable for horizontal or vertical fixing.

Available in NL, PB, CP, PN, SCP, SN, ABU, BRZ finishes



Surface bolt, locking P7360L-A, B, or C

P7360L-A, B, or C Surface bolt, locking

Length: A = 152mm; 6"
B = 203mm; 8"
C = 254mm; 10"

3 types of keeper included.
Locks with allen key (included).
Suitable for horizontal or vertical fixing.

Available in NL, PB, CP, PN, SCP, SN, ABU, BRZ finishes



NL
Non lacquered brass



PB
Polished brass



CP
Chrome plate



PN
Polished nickel



SCP
Satin chrome

Additional door fittings

Flush bolt - sunk slide P7302-A, B



P7302-A, B Flush bolt - sunk slide
Size: A = 76mm x 13mm; 3" x 1/2"
B = 102mm x 13mm; 4" x 1/2"

Bolt Ø: 11mm; 7/16"
Throw: 9mm

Size A available in NL, PB, CP, SCP finishes

Size B available in NL, PB, CP, PN, SCP, ABU, BRZ finishes

Lever flush bolt P7351-A, B



P7351-A, B Lever flush bolt
Size: A = 152mm x 19mm; 6" x 3/4"
B = 203mm x 19mm; 8" x 3/4"

Bolt Ø: 11mm; 7/16"
Throw: 16mm

Available in NL, PB, CP, PN, SCP, SN, ABU, BRZ finishes

101

Lever flush bolt P7352-C



P7352-C Lever flush bolt
Size: 254mm x 25mm; 10" x 1"

Bolt Ø: 11mm; 7/16"
Throw: 16mm

Available in PB, CP, PN, MBC finishes



SN
Satin nickel



ABU
Antique brass
unlacquered



BRZ
Bronze



MBC
Matt black
chrome

Additional door Fittings

'Wall type' Door catch P4010



P4010 'Wall type' Door catch, adjustable
Backplate: 51mm x 32mm; 2" x 1 1/4"

Available in NL, PB, CP, PN, SCP, SN, ABU, BRZ finishes

Floor mounted door stop P4011



P4011 Floor mounted door stop
Size Ø: 44.5mm; 1 3/4"
Projection: 25mm; 1"

Available in NL, PB, CP, PN, SCP, SN, ABU, BRZ, MBC finishes

102

Skirting or wall mounted door stop P4012



P4012 Skirting or wall mounted door stop
Backplate Ø: 44.5mm; 1 3/4"
Projection: 73mm; 2 7/8"

Available in NL, PB, CP, PN, SCP, SN, ABU, BRZ, MBC finishes



NL
Non lacquered brass



PB
Polished brass



CP
Chrome plate



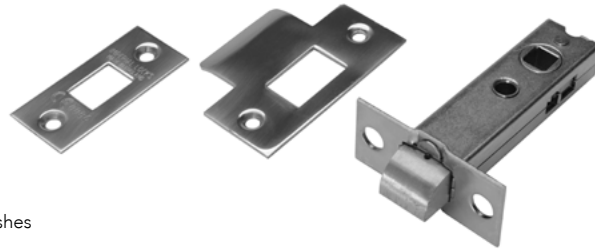
PN
Polished nickel



SCP
Satin chrome

Additional door Fittings

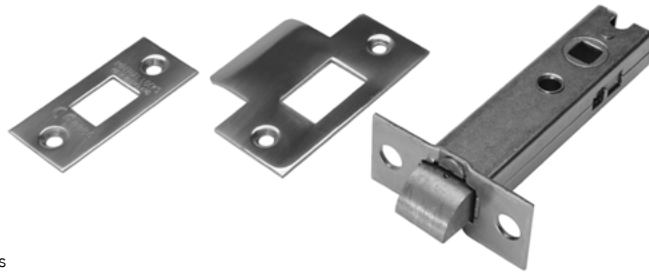
Latches P4027 (USA only)



P4027KNO Passage latch 2 3/8" backset for knobs
P4027LEV Passage latch 2 3/8" backset for levers
 Length to spindle centre: 60mm; 2 3/8"

Available in NL, PB, CP, PN, SCP, SN, ABU, BRZ finishes

Latches P4028 (USA only)



P4028KNO Passage latch 2 3/4" backset for knobs
P4028LEV Passage latch 2 3/4" backset for levers
 Length to spindle centre: 70mm; 2 3/4"

Available in PB, CP, PN, SCP, SN, ABU, BRZ finishes

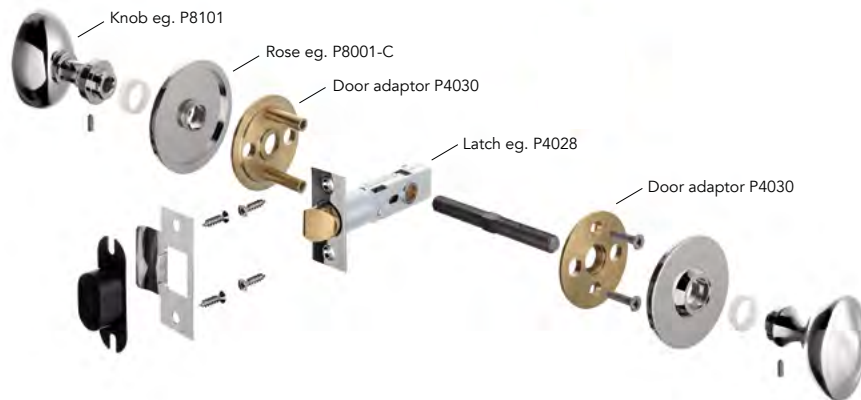
Pre-bore adaptor P4030



P4030 Pre-bore adaptor

For use with above passage latches with knobs/levers and the following concealed roses:

- P8001-B, C
- P8003-B, C
- P8006-C
- P8009-C



SN
Satin nickel



ABU
Antique brass
unlacquered



BRZ
Bronze



MBC
Matt black
chrome

Additional door Fittings

Privacy bolt P4029 (USA only)

P4029 Privacy bolt 2 3/8" backset for knobs

Length to spindle centre: 60mm; 2 3/8"

Available in NL, PB, CP, PN, SCP, SN, ABU, BRZ finishes



Privacy bolt P4032 (USA only)

P4032 Privacy bolt 2 3/4" backset for knobs

Length to spindle centre: 70mm; 2 3/4"

Available in NL, PB, CP, PN, SCP, SN, SSF, ABU, BRZ finishes



NL
Non lacquered brass



PB
Polished brass



CP
Chrome plate



PN
Polished nickel



SCP
Satin chrome

Flush Fittings

Flush spring catch P381-B

P381-B Flush spring catch
Size: = 51mm x 38mm; 2" x 1 1/2"

Available in NL, PB, CP, SCP finishes



Flush pull P1739

P1739-A, C Flush pull
A size 76mm x 38mm; 3" x 1 1/2"
C size 102mm x 45mm; 4" x 1 3/4"

Size A available in NL, PB, CP, PN, SCP, SN, ABU, BRZ finishes

Size C available in NL, PB, CP, PN, SCP, SN, SSF, ABU, BRZ finishes



Flush handle P1177

P1177-A, B Flush handle
A size: = 76mm x 48mm; 3" x 1 7/8"
B size: = 89mm x 51mm; 3 1/2 x 2"

Size A available in PB, CP, PN finishes

Size B available in NL, PB, CP, PN, SCP, ABU, BRZ finishes



Flush handle set P7897

P7897 Flush handle set
Size: = 76mm x 76mm; 3" x 3"
Supplied as a pair.

Available in NL, PB, CP, PN, SCP, SN, ABU, BRZ, MBC finishes



SN
Satin nickel



SSF
Stainless steel
finish



ABU
Antique brass
unlacquered



BRZ
Bronze



MBC
Matt black
chrome

Cabin hooks

Cabin hook P7100

P7100-C, D Cabin hooks
 Length C 76mm; 3"
 Length D 102mm; 4"

Size C available in PB, CP, SCP finishes

Size D available in NL, PB, CP, PN, SCP,
 SN, ABU, BRZ finishes



Silent pattern cabin hook P2872-F

P2872-F Silent pattern cabin hook
 Length 152mm; 6"
 Extra eye plate P9911F

Available in NL, PB, CP, PN, SCP, SN, ABU, BRZ finishes



Ventilators

Louvre ventilator P2854-B

P2854-B Louvre ventilator
 Size: = 228mm x 76mm; 9" x 3"

Available in NL, PB, CP, PN, SCP finishes



Hit and miss ventilator P2850

P2850-B, C Hit and miss ventilator
 B size 228mm x 76mm; 9" x 3" (Illustrated)
 C size 228mm x 152mm; 9" x 6"

Available in NL, PB, CP, PN, SCP finishes



NL
 Non lacquered brass



PB
 Polished brass



CP
 Chrome plate



PN
 Polished nickel



SCP
 Satin chrome

Coat hooks

Single wardrobe hook P2349

P2349 Single wardrobe hook
Projection: = 55mm; 2 1/8"

Available in NL, PB, CP, PN,
SCP, SN, ABU, BRZ finishes



Double wardrobe hook P116

P116 Double wardrobe hook
Projection: = 38mm; 1 1/2"

Available in NL, PB, CP, PN,
SCP, SN, ABU, BRZ finishes



Hat and coat hook P3055

P3055 Hat and coat hook
Projection: = 89mm; 3 1/2"

Available in NL, PB, CP, PN,
SCP, ABU, BRZ finishes



Hat and coat hook P3159

P3159 Hat and coat hook
Size: = 79mm; 3 1/8"

Available in NL, PB, CP, PN,
SCP, SN, ABU, BRZ finishes



SN
Satin nickel



ABU
Antique brass
unlacquered



BRZ
Bronze

Miscellaneous Fittings

Counter flap catch P4945



P4945 Counter flap catch
 Projection: = 85mm; 3 3/8"
 Max counter thickness: = 40mm; 1 9/16"

Available in PB, CP, SCP finishes

Handrail bracket P3950-A



P3950-A Handrail bracket
 Projection: = 73mm; 2 7/8"
 Base Ø: = 62mm; 2 3/8"

Available in NL, PB, CP, PN,
 SCP, SN, ABU, BRZ finishes

108

Hasp and staple P6064-A



P6064-A Hasp and staple
 Size: = 76mm x 25mm; 3" x 1"

Available in PB, CP finishes

Trip catch P9501



P9501 Trip catch
 Size: = 73mm x 47mm x 9.5mm;
 2 7/8" x 1 7/8" x 3/8"

Available in CP finish



NL
 Non lacquered brass



PB
 Polished brass



CP
 Chrome plate



PN
 Polished nickel



SCP
 Satin chrome



SN
Satin nickel



ABU
Antique brass
unlacquered



BRZ
Bronze

INDEX

PRODUCT	PAGE	PRODUCT	PAGE	PRODUCT	PAGE	PRODUCT	PAGE
P47-C	62	P4514-B,C	78	P6984	17	P8052-A,B,C	28
P116	107	P4515-LP	81	P7007	69	P8055-A,B,C	30
P268-B	92	P4516-K	81	P7009	69	P8056-B	29
P381-B	105	P4517-HP,MP	83	P7100-C,D	106	P8057-A,B	31
P783	52	P4517L-HP,MP	83	P7301	99	P8060-B	34
P784	53	P4517LS-MP	83	P7302-A,B	101	P8061-B,C	32
P786-A,B,C	54	P4517S-MP	83	P7303	99	P8062-B	35
P787-A,B,C	58	P4518-B	79	P7305	99	P8065-B,C	33
P788-B,C	56	P4525-HP,MP	87	P7349-A,B,C,D	100	P8072CR	44
P789-B,C	60	P4525S-MP	87	P7351-A,B	101	P8072T	44
P796-A,B,C	55	P4526	95	P7352-C	101	P8072TUS	44
P797-A,B,C	59	P4527-HP,MP	84	P7360L-A,B,C	100	P8073CR	43
U798	62	P4527L-HP,MP	84	P7487	36	P8073T	43
P798-B,C	57	P4527LS-MP	84	P7500	68	P8099-A	98
P799-B,C	61	P4527S-MP	84	P7502	68	P8101	37
P844-A,B	91,98	P4536-A,B	80	P7504	68	P8102	50
P1170-C	92	P4553-A,B	81	P7580	67	P8103	97
P1175-C	92	P4611-L	94	P7581	67	P8163	97
P1177-A,B	105	P4611-R	94	P7584	67	P8150CR	47
P1739-A,C	105	P4626	95	P7585	70	P8150T	47
P1972-A	93	P4627-L	96	P7586	70	P8160CR	40
P2130-B,C	66	P4627-R	96	P7587	70	P8160T	40
P2132-A,B	64	P4628	96	P7590	74	P8161CR	45
P2134-A,B	65	P4884-L	92	P7591	74	P8161T	45
P2146-A	92	P4925	88	P7592	74	P8162CR	46
P2182-B	98	P4925-L	88	P7593	74	P8162T	46
P2349	107	P4945	108	P7594	74	P8163	97
P2395	48	P6040	4,5	P7595	75	P8164	97
P2398	50	P6041	4,5	P7596	75	P8165CR	41
P2577	91	P6044	6,7	P7597	75	P8165T	41
P2636	91	P6046	8,9	P7598	75	P8171T	47
P2659	91	P6047	8,9	P7599	75	P8171US	47
P2850-B,C	106	P6052	26	P7800	71	P8172T	47
P2854-B	106	P6056	18	P7802	71	P8172TUS	47
P2872-F	106	P6056	18	P7897	105	P8174CR	39
P3055	107	P6057	19	P8001-A,B,C	20,28,29	P8174T	39
P3159	107	P6059	92	P8003-A,B,C	30,31	P8174TUS	39
P3950-A	108	P6064-A	108	P8004	18,19	P8176CR	38
P4006-A	72	P6131	88	P8005	26	P8176T	38
P4008	72	P6131-L	88	P8006-B,C	14,34	P8176TUS	38
P4010	102	P6132-L	89	P8007-B,C	16,22,32,37	P8178CR	42
P4011	102	P6276-B	89	P8008-B,C	15,21,23,35	P8178T	42
P4012	102	P6276L-B	89	P8009-B,C	17,33,36	P8178TUS	42
P4024	73	P6277-B	90	P8010	4,5,6,7,8,9	P8182	49
P4026	73	P6277L-B	90	P8020	14,27	P8183	49
P4027KNO	103	P6277LN-B	90	P8021	27	P8184	49
P4027LEV	103	P6278	89	P8022	27	P8192	49
P4028KNO	103	P6278L	89	P8023CR	27	P8193	49
P4028LEV	103	P6279	90	P8023T	27	P8194	49
P4029	104	P6279L	90	P8024CR	27	P8195	48
P4030	103	P6279LN	90	P8024T	27	P8196	48
P4032	104	P6759-HD	93	P8025	4,8,16,18,20,22,26,27	P8250-A,B,C,D,E,F	10
P4144-B	93	P6759-HL	93	P8027	51	P8252-A,B,C,D,E,F	11
P4293-A	80	P6973	20	P8028	51	P8254-A,B,C,D,E,F	12
P4331	62	P6973-B	22	P8030	19,21,27	P8263	97
P4360	94	P6973SP	24	P8031	27	P8623	93
P4511-HP,MP	82	P6973SP-B	24	P8032	15,27	P9501	108
P4511L-HP,MP	82	P6974	21	P8033CR	27		
P4511LS-MP	82	P6974-B	23	P8033T	27		
P4512-A,B,C	78	P6974SP	25	P8034CR	27		
P4513-HP,MP	85	P6974SP-B	25	P8034T	27		
P4513S-MP	85	P6981	14	P8035	5,9,17,23,27		
P4513S-W	86	P6982	15	P8037	51		
P4513-W	86	P6983	16	P8038	51		

SAMUEL HEATH

Head office and customer service
Leopold Street
Birmingham
England
B12 0UJ

Tel: +44 (0)121 766 4200
Email: info@samuel-heath.com
www.samuel-heath.com

Specification enquiries
London Showroom
1st Floor, North Dome
Design Centre Chelsea Harbour
London
SW10 0XE

Tel: +44 (0)20 7352 0249
Email: showroom@samuel-heath.com

US Customer Service
139 east 35th Street, Suite 2-J
New York
N.Y. 10016
USA
(No merchandise can be accepted
at the above address)

Tel: (212) 696 0050
Email: usa@samuel-heath.com



@Samuelheathofficial



@Samuel_Heath



Samuel Heath



Samuel Heath